



LITTLE OWL



FARM PARK

MAP
& PARK INFO

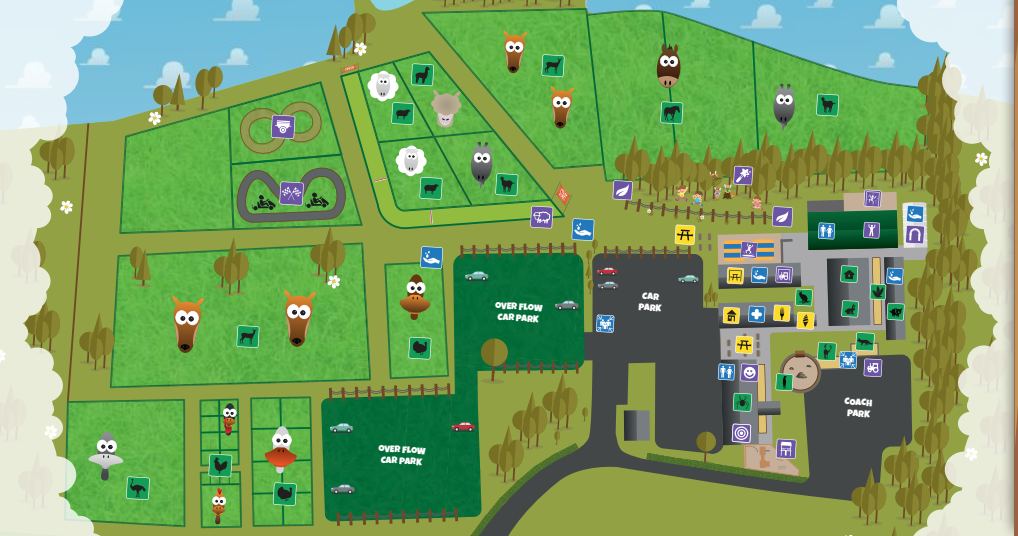
WELCOME!

Welcome to Little Owl Farm – Explore & Tour, a new way to visit our farm.

We've been very busy during our closure period, making changes to ensure you and your household have a fun AND safe visit to us. We hope you like the changes we have made and that you enjoy exploring some new areas of the farm. Just remember these three things which will help us all stay safe together:

- Maintain at least 1 metre distance from other households
- Wash your hands throughout your visit (we have 7 hand washing stations!)
- Look out for our easy to follow information signs which you will see around the farm.





MAP KEY ON NEXT PAGE >



Please note that any attractions marked with a star means that they are weather dependent or are a seasonal activity.

ANIMALS ★

Ponies	Rhea	The Fox Den
Alpacas	Poultry	Critter Cabin
Goats	Sheep	Reindeer
Chickens	Wallabies	Petting and Demonstrations Barn
Deer	Pig Barn	
Exotic Bird Aviaries	Meerkat Mischief	

ATTRACTIONS & PLAY

Nature Trail	Fairy Trail	The Sheepstakes
Go Karts	Polytunnel	Soft Play Area
Barrel Bugs ★	Shootout Alley	Indoor Tractors
Tractor Trailer Ride ★	Physical Education Barn	Bouncy Pillows ★
Outdoor Play Area ★	Traverse Climbing Wall ★	

FOOD, DRINK & SHOPPING

Park Entrance and Shop
Cafeteria
Outdoor Picnic Area
Indoor Picnic Area
Ice-cream ★

FACILITIES, HEALTH & SAFETY

Toilets
Hand Washing Station
Fire Assembly Point
First Aid Point

MAP KEY



ANIMALS



FOOD, DRINK & SHOPPING



**FACILITIES,
TOILETS &
HANDWASHING**



**ATTRACTIONS
& PLAY**

HEALTH & SAFETY GUIDELINES

Remember to wash your hands after you touch the animals or their pens and especially before eating or drinking, and after removing footwear.

It is your decision whether a child is allowed to touch or feed the animals. This especially needs to be considered for children who put things in their mouths or have a weak immune system.

To eliminate the risk of serious infection entirely, children should avoid contact with animals and their faeces.

It is primarily the parent or guardian's responsibility to supervise the washing of children's hands to help reduce the risk of infection. Hand washing facilities are sited on the exit of each animal barn and in the Top Fields.

ARE YOU PREGNANT, OR THINK YOU MAY BE?

Pregnant ladies should avoid contact with Ewes and newly born Lambs, Cows and newly born Calves as well as Nanny Goats and their Kids. Please pick up a leaflet from Reception for more information. Published by the Health Protection Agency, 'Avoiding infection on farm visits'.

FIRST AID FACILITIES



First Aid Point

First aid facilities and trained staff can be found at Reception/Shop. You will find the First Aid Point marked on our park maps and on various signs throughout the park as shown above.

IN CASE OF FIRE



Fire Assembly Point

In the event of a fire, raise the alarm and make your way to one of the Fire Assembly Points which are located at the gate by the Meerkat pen, and in the car park by the entrance driveway. You will find the Fire Assembly Points marked on our park maps and on various signs throughout the park as shown above.

CODE OF CONDUCT

Our 'Code of Conduct', stated on the website and on entry must be adhered to. This is for the comfort and safety of our visitors and staff. If a visitors' behaviour is unacceptable, in accordance with our 'Code of Conduct', they may be asked to leave the park without a refund.

H&S INFO ON NEXT PAGE >

HEALTH & SAFETY GUIDELINES

- **WASH HANDS PROPERLY** – use soap and water for two minutes then dry thoroughly after feeding or touching the animals.
- **DO NOT** eat/drink in any animal areas.
- **PLEASE** supervise your children at all times.
- **PLEASE DO NOT SMOKE** whilst on the farm.
- Our animals are checked regularly throughout the day but please notify a member of staff should you encounter a problem from a distressed animal.
- Please notify us in case of an emergency. Our first aid point is located in the Reception/Shop .Emergency contact: **07732 762360**, this number is for emergency use only!



**BE SAFE &
HAVE FUN!**

FAQ'S ON NEXT PAGE >