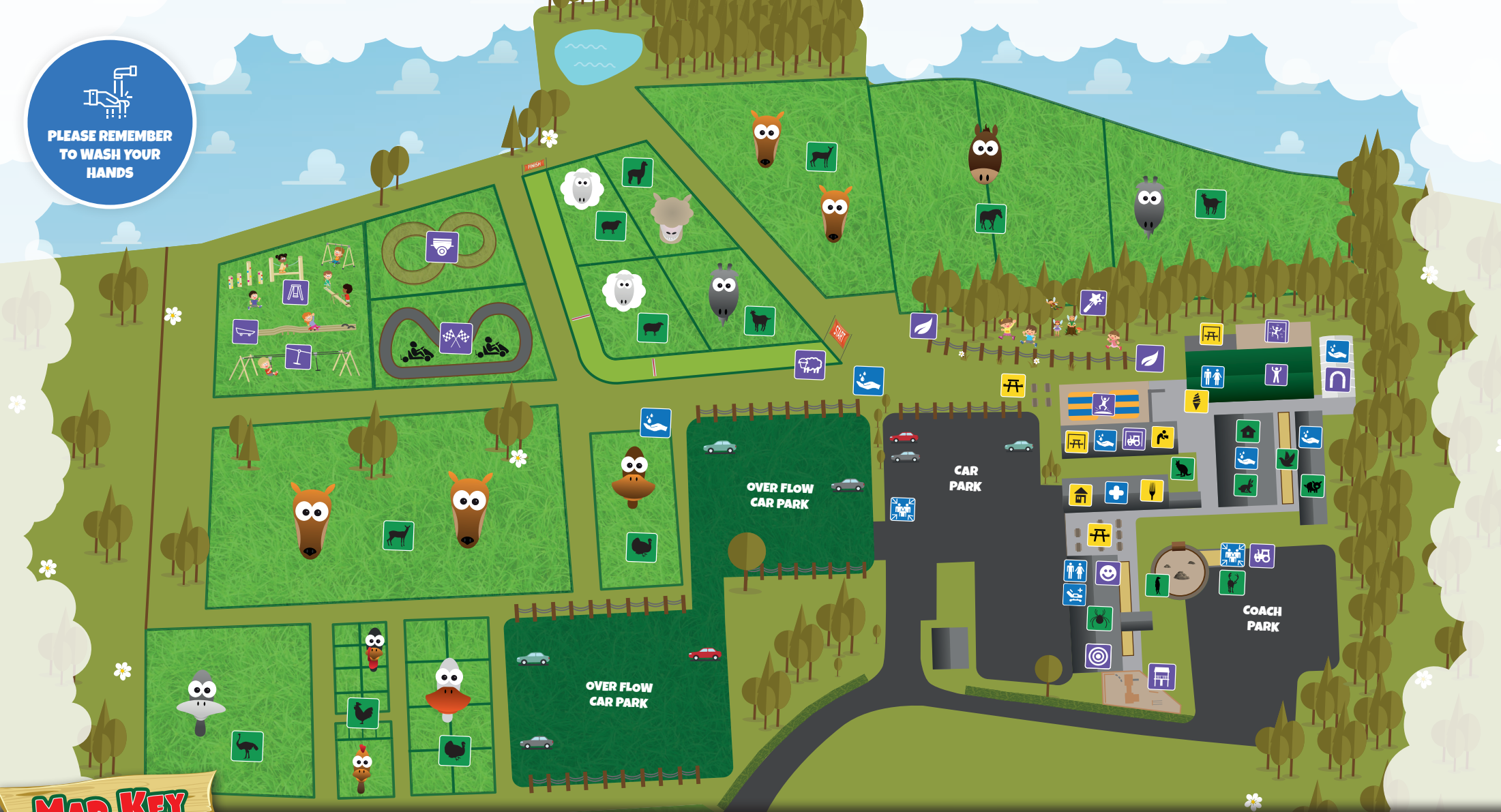


**PLEASE REMEMBER TO WASH YOUR HANDS**



# MAP KEY

- ANIMALS
- ATTRACTIONS & PLAY
- FOOD, DRINK & SHOPPING
- FACILITIES, TOILETS & HANDWASHING

ANIMALS			ATTRACTIONS & PLAY			FOOD, DRINK & SHOPPING		FACILITIES, HEALTH & SAFETY	
Ponies	Rhea	Reindeer	Nature Trail	Traverse Climbing Wall	Barrel Bugs <span style="color: blue;">★</span>	Park Entrance and Shop	Toilets		
Alpacas	Poultry	Meerkat Mischief	Fairy Trail	Commando Course	Polytunnel	Cafeteria	Hand Washing Station		
Chickens	Sheep	Exotic Bird Aviaries	The Sheepstakes <span style="color: blue;">★</span>	Physical Education Barn	Zipline	Outdoor Picnic Area	Fire Assembly Point		
Petting and Demonstrations Barn	Wallabies	Goals	Bouncy Pillows	Soft Play Area – CLOSED	Sledge Run	Indoor Picnic Area	First Aid Point		
Deer	Pig Barn		Indoor Tractors	Tractor Trailer Ride <span style="color: blue;">★</span>	Go Karts	Ice-cream	Medical Changing Bed		
	Critter Cabin		Shootout Alley	Adventure Playground	<span style="color: blue;">★</span> Please note that any attractions marked with a star are weather dependent or seasonal activities.				

# WELCOME!

Set in 18 acres of farmland near Ombersley in Worcestershire, Little Owl Farm Park is a perfect way to enjoy a great fun day out for all the family.

We have over 90 different breeds of animals/birds at Little Owl Farm Park who are waiting to meet you. This includes some of your farm yard favourites like our; pigs, goats, chickens, rabbits and even some of more unusual residents like our; deer, meerkats, owls & marmosets.

## SO MANY THINGS TO DO...

What will you do first? If you love the outdoors, head to our Top Field Paddocks with birds, animals, and outdoor play areas like Go-Karts, Duo Zipline, Four Lane Sledge Run, and Adventure Playground.

Prefer indoor activities? Explore animal barns with furry friends in the Petting Barn, larger ones in the Pig Barn, and creepy crawlies in the Critter Cabin. Plus, enjoy multiple indoor play areas, including a three-storey soft play area, Shoot Out Alley, and undercover Bouncy Pillows. All this & more!

## OUR AREAS

Explore our park! you can find a full list of attractions within each area on the map key.

ANIMALS

ATTRACTIONS & PLAY

FOOD, DRINK & SHOPPING

FACILITIES, TOILETS & HANDWASHING

# HEALTH & SAFETY

Health & Safety has always been a key factor at Little Owl Farm Park. So here are some important things to remember whilst visiting the farm.

- Remember to wash your hands after you touch the animals or their pens and especially before eating or drinking, and after removing footwear.
- It is your decision whether a child is allowed to touch or feed the animals. This especially needs to be considered for children who put things in their mouths or have a weak immune system.
- To eliminate the risk of serious infection entirely, children should avoid contact with animals and their faeces.
- It is primarily the parent or guardian's responsibility to supervise the washing of children's hands to help reduce the risk of infection. Hand washing facilities are sited on the exit of each animal barn and in the Top Fields.

## ARE YOU PREGNANT, OR THINK YOU MAY BE?

Pregnant ladies should avoid contact with Ewes and newly born Lambs, Cows and newly born Calves as well as Nanny Goats and their Kids. Please pick up a leaflet from Reception for more information. Published by the Health Protection Agency, 'Avoiding infection on farm visits'.

## FIRST AID FACILITIES



First Aid Point

First aid facilities and trained staff can be found at Reception/Shop. You will find the First Aid Point marked on our park maps and on various signs throughout the park as shown above.

## IN CASE OF FIRE



Fire Assembly Point

In the event of a fire, raise the alarm and make your way to one of the Fire Assembly Points which are located at the gate by the Meerkat pen, and in the car park by the entrance driveway. You will find the Fire Assembly Points marked on our park maps and on various signs throughout the park as shown above.

## CODE OF CONDUCT

Our 'Code of Conduct', stated on the website and on entry must be adhered to. This is for the comfort and safety of our visitors and staff. If a visitors' behaviour is unacceptable, in accordance with our 'Code of Conduct', they may be asked to leave the park without a refund.

- **WASH HANDS PROPERLY** – use soap and water for two minutes then dry thoroughly after feeding or touching the animals.
- **DO NOT** eat/drink in any animal areas.
- **PLEASE** supervise your children at all times.
- **PLEASE DO NOT SMOKE** whilst on the farm.
- Our animals are checked regularly throughout the day but please notify a member of staff should you encounter a problem from a distressed animal.
- Please notify us in case of an emergency. Our first aid point is located in the Reception/Shop. Emergency contact: **07732 762360**, this number is for emergency use only!

## ACCESSIBILITY AT THE FARM

Little Owl Farm Park strives to be an accessible visitor attraction to all.

We have lots of helpful information on our website regarding accessibility at the farm park. This has been created to provide you with as much information as possible, to help make planning your visit a little easier.

Please visit our Accessibility page on our website at [www.littleowlfarmpark.co.uk](http://www.littleowlfarmpark.co.uk)

ENJOY  
YOUR VISIT

THANK YOU FOR VISITING  
US AT LITTLE OWL FARM  
PARK. WE HOPE TO SEE  
YOU AGAIN SOON!